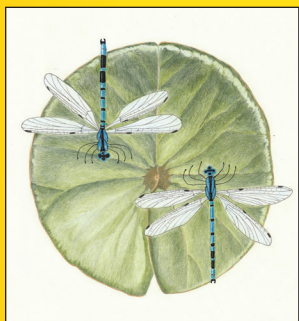




2023

Artists of Evergreen **OPEN DOOR STUDIOS**

WE'RE ALWAYS THE 3RD WEEKEND IN SEPTEMBER!



A Self-Guided Studio Tour & Art Demonstrations

SEPTEMBER 16 & 17, 2023
10AM - 5PM

WWW.EVERGREENOPENDOORSTUDIOS.COM

50TH ANNUAL

ROCKY MOUNTAIN NATIONAL *Watermedia*

SEPTEMBER 21 - OCTOBER 28
CENTER FOR THE ARTS EVERGREEN
EVERGREENARTS.ORG



Angel of Omega

Stephanie Goldman, 2023 RMNW Juror



Sunset Cliffs

Ken Goldman, 2023 RMNW Juror

LIV

Sotheby's
INTERNATIONAL REALTY

FARMERS
INSURANCE
BRUCE ANDERSON AGENCY



Colorado
Creative
Industries



CENTER FOR THE
ARTS EVERGREEN



SHADOW MOUNTAIN

GALLERY

Fine art and fine crafts by local
Evergreen artists
One-of-a-kind pieces priced
for every budget
A must for local residents,
guests and out-of-town visitors



Zoe Kowalchuk



Nicole Beers



Jenniesue Roberts



Sarah Keeson



Joan Crosse



Susan Lange

- 2 Paul Thisted
- 13 Nicole Beers
- 15 Beverley Harper-Tinsley
- 16 Patti Gill

Located on Main Street in Downtown
Evergreen, between Java Groove and
Beau Jo's. Open Daily 10 -5
ShadowMountainGallery.com

Welcome Art Lovers!



We invite you into our working studios to see demonstrations, works in progress, and finished art pieces – Use this tour book to guide you from place to place. The Studio Tour is all free of charge. We'd love to see you!

Along the tour you can expect to meet the artists and discuss their tools and techniques and their inspiration!

Evergreen Glass is our primary sponsor and is our main distribution point for tour books. See Evergreen Glass on our back cover.

We are not having our reception at the bank this year but hope to have the preview show leading up to the tour!

Evergreen offers plenty of lodging and dining options to make it a great mountain getaway and ensure plenty of time to visit all of the studios. The two day, self-guided tour will take you to parts of Evergreen you may not see otherwise, winding through beautiful evergreen and aspen-lined roads.

Roadside signage will be abundant, making it easy to find each studio. Numbers on the signs correspond to each studio's circled number in the tour book to guide you along the way. We're excited to visit with you!

Sincerely,

Jeannette Stutzman

Artist #10 & ODS Studio Tour Coordinator



SAVE THE DATE FOR EACH YEAR!

WE'RE ALWAYS THE 3RD WEEKEND IN SEPTEMBER!

WWW.EVERGREENOPENDOORSTUDIOS.COM

Jane Christie

1

See Map Pages 14-15

Medium: Pastel, Oil

Jane's Paintings reflect her love of nature, color, light and the impressionistic style. Her goal is to share her love of art through the paintings she creates. She enjoys plein air and studio painting. She offers pastel workshops.

Directions: 29340 Industrial Way

At Evergreen Glass: Go to I-70 to El Rancho & Evergreen Pky, exit, turn E at light on Swede Gulch Rd, R on Hotel Way, L on Nob Hill, L on Industrial Way, Building is on the R.



720.480.3683 • JaneChristieArt.com

Paul Thisted

2

See Map Pages 14-15

Medium: Oil



Western images are my creative focus. I capture spirited scenes with juicy color. I want the viewer to join my story & feel like they are part of it.

Directions: 1194 Red Lodge Drive #201

In Bergen Park at King Supers light, turn onto Sugarbush Dr, turn L @ stop sign, staying on Sugarbush for 1/10 mile, turn L onto Red Lodge Dr, stop at bldg 1194 on the R. I am in unit #201 on R side.

720.273.1504 • PaulThisted.com

Linda Dollahan

3

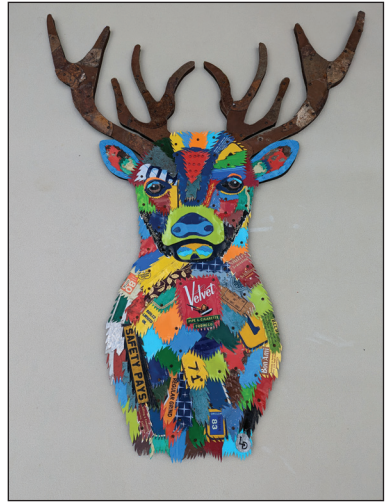
See Map Pages 14-15

Medium: Mixed Media

*I believe art should take us to our happy place!
My style is an eclectic mix of materials ranging
from vintage, distressed and upcycled metals
and other vintage "stuff".*

Directions: 3145 Sulky Lane

Frontage Rd off Evergreen Pkwy to Chestnut.
Stay Left, up the hill, ½ mi. to Left on Sulky
Lane to end of cul-de-sac. House on the Left,
beige with red trim, red log decking.



720.290.2015 • LindaDollahanArt.com

Pat Fitzharris Newman

4

See Map Pages 14-15

Medium: Clay



*Japanese and English ceramics
are my influences but I feel most
creative combining porcelain
and stoneware in handbuilt slab
pieces. My studio is in a 100 year
old barn. Idske Hiemstra will be
showing her fabric pieces here also.
Her botanical drawings printed on
fabric complement my glazes.*

Directions: 2051 Kerr Gulch Road

From Hwy 74 (Evergreen Parkway) turn right down Kerr Gulch Road if coming
from Evergreen. My studio is 2.2 miles down Kerr Gulch on the right. Walk
around the house to the big white barn.

720.988-9824 • EvergreenOpenDoorStudios.com

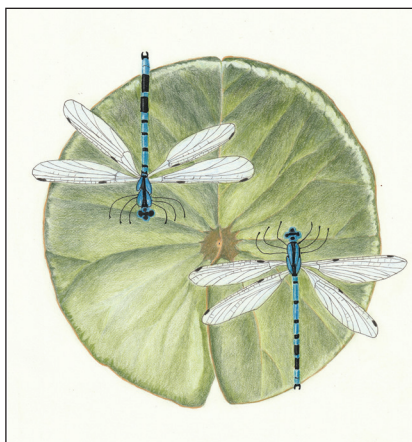
Idske Hiemstra

5

See Map Pages 14-15

Medium: Colored Pencil, Ink, Fiber

My love for textiles and nature finds the perfect outlet in surface design. I start with a detailed botanical drawing in colored pencil and ink. I adapt the drawing to a repeating pattern, scan it and have it printed on fabric. Pat Newman's pottery complements my designs wonderfully.



Directions:

2051 Kerr Gulch Road

Take the Kerr Gulch exit from Evergreen Parkway. Pat Newman's studio is the white barn at 2051 Kerr Gulch Road.

720.201.5224 • EvergreenOpenDoorStudios.com

Ann Simpson

6

See Map Pages 14-15

Medium: Watercolor, Acrylic, Pastel, Clay, Bronze



Watercolor and clay are my favorite media, although nothing is out of the question when choosing how to visually communicate. I play with the elements and principles of design to create a unique version of the subject, usually representational but not necessarily realistic. I feel the diverse range of subject matter.

Directions: 2548 Medinah Drive

Hyw 74. Entrance to Hiwan Golf Club. Turn right on Medinah Drive. On the uphill side of the road.

303.902.5237 • AnnSimpsonArt.com

Csilla Florida

7

See Map Pages 14-15

Medium: Oil, Watercolor, Acrylic, Mixed Media, Photography

Csilla Florida is an accomplished artist, placing her work locally and internationally. "Art has always been part of my life and it has evolved through my experiences from living abroad. I strive to capture my impressions of the world through different techniques, colors and textures. Every painting tells a story.



Directions: 2881 Olympia Lane

Take CO-74 N/Evergreen Pkwy to CO-74 Frontage S/Lewis Ridge Rd, 2nd left- Scotia Rd, 1st Right- Wingfoot, 1st right- Olympia Cr, 1st Right Olympia Ln, 3rd house on right.

303.906.7575 • PaintbrushImpressions.com

Amy Love

8

See Map Pages 14-15

Medium: Mixed Media



Born and raised in Colorado, Ms. Love lives and works from her home art studio in Evergreen, Colorado. She designs and creates each original piece, from large landscapes to individual art cards. Her landscapes are made mostly with batik fabrics and paper, and noted for their vibrant colors.

Directions: 30019 Aspen Lane

Coming toward Evergreen from Bergen Park on CO HWY 74, make a left onto Lewis Ridge Rd (across from Elk Meadow). Continue down to the end, about 0.8 miles. Right on Aspen Lane. Third house on the right.

720.810.3984 • EvergreenOpenDoorStudios.com

Ellen Nelson

9

See Map Pages 14-15

Medium: Portrait, Fine Art Photographer

It's an honor to be a professional photographer in Evergreen! But much has changed in Evergreen and in photography since I moved here in 1984.

To earn a living, I must be adept at many different photographic genres: from headshots and portraits to nature, wildlife and wild events to creating images worthy of your wall.

Directions: 3112 Evergreen Parkway

From Evergreen Parkway/Hwy 74, take the frontage road at Lewis Ridge Road. My studio is on the ground floor of Michele Vanag's State Farm stucco next to the Sinclair station.



303.809.8963 • EllenNelson.com

Jeannette Stutzman

10

See Map Pages 14-15

Medium: Pastel, Oil, Hand-Crafted Jewelry



Sharing paintings that are bold & direct. Offering painting classes in pastel and oil. Master Signature Member of the Pastel Society of Colorado.

Hand-crafted jewelry in silver, mixed metals & gemstones. See ad pg 22.

Directions: 3145 Sulky Lane

Frontage Rd off Evergreen Pkwy to Chestnut. Stay Left, up the hill, ½ mi. to Left on Sulky Lane to end of cul-de-sac. House on the Left, beige with red trim, red log decking.

720.320.3929 • JeannetteStutzman.com, JSArtJewelry.com

Nicole Huggins

11

See Map Pages 14-15

Medium: Soft Pastel, Oil

Nicole's works reflect a European sensibility and Impressionist influences. She uses soft pastels due to their vibrancy. Her figures are engaged in interactions with nature or in movements that portray their emotions.



Directions: 32069 Quarter Horse Road

From Hwy 74 turn on Stagecoach, left on Quarter Horse, go to the end of the road and up the driveway (two turns, past gate).

303.880.5794 • ArtfulNicoleHugg.com

Alex Redford

12

See Map Pages 14-15

Medium: Oil, Graphite



I'm so grateful to live in a place that is worth painting. Each time I pick up my brush to paint, it is one of my greatest joys.

Directions: 869 Greystone Rd

If coming from I-70 turn right on Stagecoach; If coming from the lake turn left on Stagecoach; head west on Stagecoach about 3.2 miles until you come to Greystone. Turn left onto Greystone Rd. My house is the first driveway on the right on Greystone. We have a long flat driveway!

303.917.0858 • AlexRedfordArtist.com

Nicole Beers

13 See Map Pages 14-15

Medium: Sterling Silver Jewelry

Nicole Beers is primarily a jewelry silversmith. Her sterling silver jewelry is greatly influenced by the outdoor nature of Colorado, pulling from the flora and animals of the region.

Living in the Front Range of Colorado provides a wide variety of inspiration.



Directions: 654 Stagecoach Boulevard

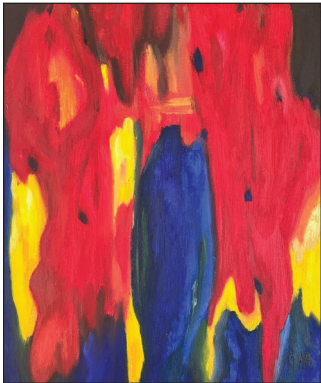
From 74 (Evergreen Turnpike) turn West onto Stagecoach Blvd. Go 3.4 miles. The driveway is on the left.

860.805.3177 • [etsy.com/shop/HoneyBrookDesigns](https://www.etsy.com/shop/HoneyBrookDesigns)

Gia Nold

14 See Map Pages 14-15

Medium: Oil, Acrylic, Mixed Media, Photography



Color, shape, line, texture and own ideas are important in my art process, often manifesting them in abstractions and one-of-a-kind explorations. Born in Peru, my art explores natural environments, contemplative practices and the desire to discover new and fun outcomes. Lessons available/giveaway prizes!

Directions: 122 David Drive

Via I-70 W take exit 252 to CO-74 to Stagecoach. R on Stagecoach. L on Greystone. L on Witter Gulch. R on Upper Bear Creek. Pass Murphy Rd. R on Echo Lake Dr. R on Patty Dr. L on David Dr. to 122 David Dr. The house is on the Right.

303.564.4220 • [TimepiecesStudio.com](https://www.timepiecesstudio.com)

Beverley Harper Tinsley

15

See Map Pages 14-15

Medium: Watercolor, Mixed Media, Ink, Oil, Acrylic

When I engage in creating, my purpose is to capture a fleeting moment- an instant of intense color, a memory, light and shadows, a piece of a dream, an ephemeral thing that will not last and might not otherwise be noticed...and to stop it in time. Painting takes me out of linear time, and I am addicted to that freedom.



Directions: 3108 Moonshadow Lane

Hwy 74 to Hilltop Dr, go N past Kittredge Gen. Store and behind post office, go R on S Russell Gulch Rd., R at Snowdrop Rd, R to stay on Snowdrop Rd, R on Sweetbriar Trail, L on Moonshadow Ln to end house.

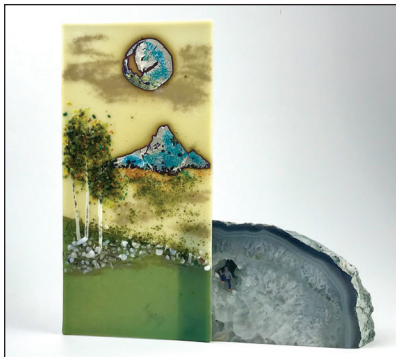
303.520.4305 • Beverley-Harper-Tinsley.Pixels.com

Patti Gill

16

See Map Pages 14-15

Medium: Kiln-formed Glass



Patti has been exploring and experimenting in glass for about 15 years. Drawn to the synthesis of science and creativity that glass provides, her work exhibits her personal experience through the interplay of light, form, and color. Her work has been shown in galleries and art shows across the western US.

Directions: 27579 Fireweed Drive

Hwy 74 S toward the lake. Left on Douglas Pk Rd, stay to the left onto Meadow Dr. Take a left onto Iris Dr. to Fireweed. Take a right onto Fireweed to the 2nd driveway on the left (across from Lariat Lodge).

303.807.2314 • PattiGillGlass.com

Susan Wechsler

17

See Map Pages 14-15

Medium: Mixed Media Mosaics

Welcome to my Mixed Media Mosaic Studio where all the magic happens. I am known throughout the Globe for my unique techniques and I teach monthly in my Evergreen studio. Come take a look at what I mosaic, my studio walls, "MY GALLERY" are covered with my work.



Directions: 27905 Meadow Drive

Going South through the town of Evergreen, take a left at Meadow Drive and then your first right past CampFire Grill into Meadow Drive Village parking lot. There is plenty of parking. I am in Unit #2 on the main floor behind the Colorado Creamery & next to Studio B yoga.

303.526.6349 • MosaicsBySusan.com

Bonnie Schechter-Orin

18

See Map Pages 14-15

Medium: Contemporary Fiber Art Quilts



My quilting passion continues to be driven by the excitement of fresh challenges with color & texture in the vast world of textiles. My contemporary work can be described as painting with fabric, as the subtle character & visual properties of each textile intensify the depth & complexity of each landscape piece.

Directions: 5630 S. Skyline Drive

From the downtown stoplight, turn onto Hwy. 73 to head South for 1.5 miles. Turn left onto Skyline Dr. & continue for ½ mile. My house/studio has a circle driveway, and sits back from the road on your left.

303.619.6090 • SocialWorkSalvation@etsy.com



Artists of Evergreen OPEN DOOR STUDIOS

**GPS is the Best Tool &
Our Signage Will Help You
Along The Route!**



**GPS is the Best Tool &
Our Signage Will Help You
Along The Route!**

Map	Artist
1	Jane Christie
2	Paul Thisted
3	Linda Dollahan
4	Pat Fitzharris Newman
5	Idske Hiemstra
6	Ann Simpson
7	Csilla Florida
8	Amy Love
9	Ellen Nelson
10	Jeannette Stutzman
11	Nicole Huggins
12	Alex Redford
13	Nicole Beers
14	Gia Nold
15	Beverly Harper Tinsley
16	Patti Gill
17	Susan Wechsler
18	Bonnie Schechter-Orin
19	Roger Ambrosier
20	Julie Leidel
21	Gretchen Borgelt
22	Susan Judy
23	Sarah St. George
24	Michelle Manquen
25	Michelene Berkey
26	Robyn Thayer

*Live Demonstrations at
the studios during the tour!*

**Time permitting,
as we're visiting with our guests...**

**DISTANCES
& TRAVEL TIMES:**

It is 7 1/2 miles from I-70
to Downtown Evergreen
(12 minutes)

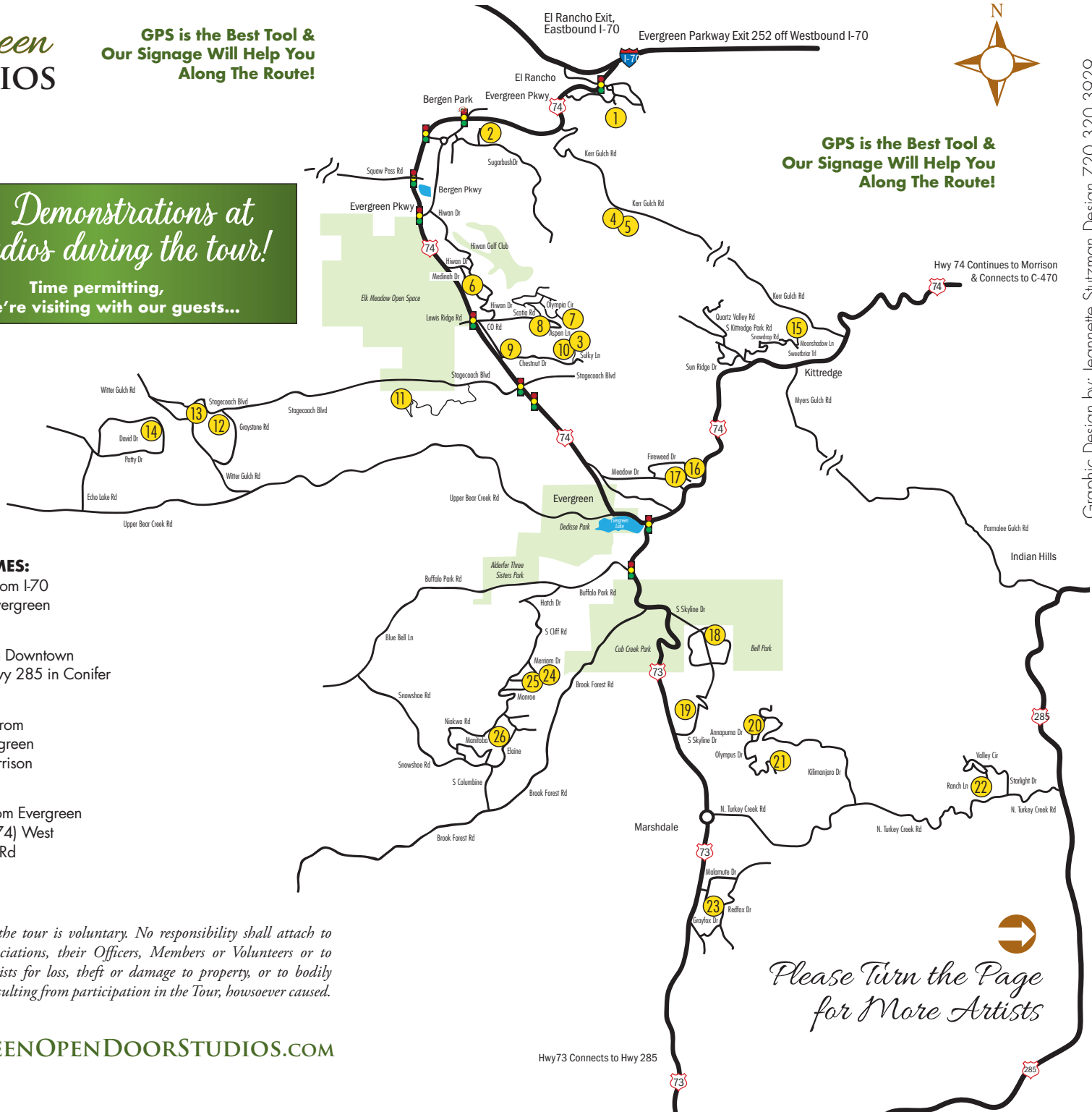
It is 9 miles from Downtown
Evergreen to Hwy 285 in Conifer
(16 minutes)

It is 12.4 miles from
Downtown Evergreen
to C-470 at Morrison
(21 minutes)

It is 4.2 miles from Evergreen
Parkway (Hwy 74) West
to Witter Gulch Rd
(9 minutes)

Participation in the tour is voluntary. No responsibility shall attach to the involved associations, their Officers, Members or Volunteers or to Participating Artists for loss, theft or damage to property, or to bodily injury or death resulting from participation in the Tour, howsoever caused.

EVERGREENOPENDOORSTUDIOS.COM



*Please Turn the Page
for More Artists*

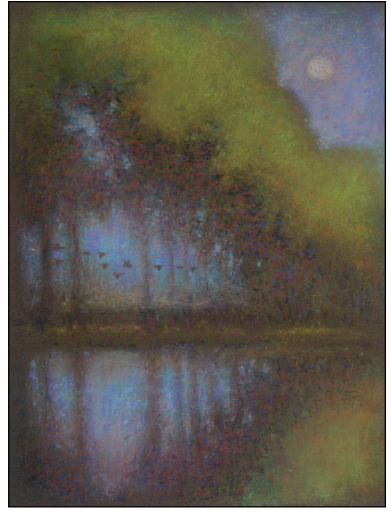
Roger Ambrosier

19

See Map Pages 14-15

Medium: Pastel

Roger's soft pastels reflect a "mood" from the landscape as opposed to an exact representation of the subject. His pastels have been recognized and awarded in several national shows.



Directions: 6209 S. Skyline Drive

From the downtown stoplight, turn on to Hwy 73 S. Go 1¼ miles, turn left on to S. Skyline Dr. (across from the ambulance bldg.) Continue on 1½ miles to the Santa Fe Adobe house.

303.674.6377 • EvergreenOpenDoorStudios.com

Julie Leidel

20

See Map Pages 14-15

Medium: Gouache, Acrylic, Enamel, Mixed Media



Inspired by the Arts & Crafts Movement (1880-1920) and the WPA era, Roycroft Master Artisan Julie Leidel evokes a feeling of yesteryear through her artwork. Craftsman oak frames often complement her gouache, acrylic, and enamel paintings. Originals & prints in 6 sizes are available for over 180+ paintings.

Directions: 6582 Annapurna Drive

From North Turkey Creek Rd & Kilimanjaro Dr: Go 1.6 mi on Kilimanjaro. Left onto Olympus Dr, go .5 mi to a sharp right onto Annapurna Dr. 2nd driveway on the right where the mailbox says LEIDEL. Park on street & walk on up.

303.263.8577 • TheBungalowCraft.com

Gretchen Borgelt

21

See Map Pages 14-15

Medium: Acrylic

Hi I'm Gretchen Borgelt. I work with acrylic paints and mediums on wrapped canvas. Most of my landscapes use a large format and are modern, colorful and laden with texture. I've lived in Colorado for 34 years and in Evergreen for the past 11 years. You'll see our beautiful mountain surroundings in my paintings.



Directions: 6784 Olympus Drive

From Denver-take 285s to N Turkey Creek. Right off the exit to Silverhorn. Right on Silverhorn to Olympus Dr. From Evergreen-Take 74 to 73 at the lake. At Marshdale roundabout take N Turkey Crk to Silverhorn to Olympus Drive.

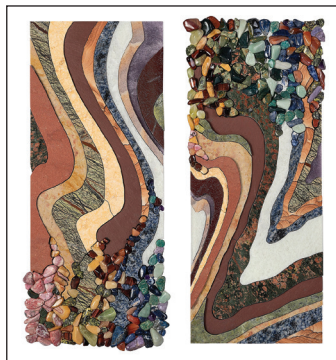
303.887.9808 • ModernStrokes.com

Susan Judy

22

See Map Pages 14-15

Medium: Sculpture



Cutting & polishing stone to highlight its beauty and mystery is always uplifting. I combine techniques of stone mosaic with relief to create 2- & 3-D stone sculptures. Minerals & fossils are inlaid in both abstract & geologic art. My studio includes inspiring materials, a design work space & a lapidary workshop.

Directions: 6755 Ranch Lane, Morrison

US-285 S to North Turkey Creek. Turn R, go 0.9 mi. At Starlight Dr, turn R, 0.3 mi. Stay L on Starlight Dr & go 0.3 mi. to Westway Dr. Turn L & go 0.1 mi. to S. Valley Cir. Turn L on Ranch Ln, pass Low Ln. Green home on R.

303.809.2629 • StoneQuiltDesign.com

Sarah St. George

23

See Map Pages 14-15

Medium: Pastel

My paintings reflect a life long passion for the outdoors. The saturated colors and immediacy of soft pastels inspire me to capture the light and impression of a moment. I paint primarily landscapes both plein air and in my studio. I am a Master Signature member of the Pastel Society of Colorado.



Directions: 7853 Red Fox Drive

From HWY 73 take Malamute Dr (across from abandoned barn); @ T in road turn left onto Malamute Terrace, @ next T (past pond) turn right onto Red Fox Dr. Continue apx. 1/4 mile to Grey house on right #7853 (green mail box).

303.674.3561 • SarahStGeorge.com

Michelle Manquen

24

See Map Pages 14-15

Medium: Kilnformed Glass, Ceramic & Metals



My work is primarily kilnformed glass enhanced by combining metals and ceramics to create functional, wall hung and sculptural pieces.

Directions: 30066 Monroe Drive

From Hwy 73 turn onto Buffalo Park Rd. Turn left on Hatch. Hatch turns into Cliff, stay on the paved road. Turn left on Merriam. Turn right on Monroe. We are the first house on the left.

303.330.2516 • EvergreenOpenDoorStudios.com

Michelene Berkey

25

See Map Pages 14-15

Medium: Jewelry

Living in the foothills of Denver my jewelry is a reflection of the environment that surrounds me. Small twigs are cast in gold and silver; leaves are roller-printed silver sheet. Each piece of jewelry is fabricated using traditional metalsmithing techniques and embellished with high karat gold and select gemstones.



Directions: 30066 Monroe Drive

From Hwy 73 turn onto Buffalo Park RD.

Turn left on Hatch. Hatch turns into Cliff, stay on the paved road. Turn left on Merriam. Turn rt on Monroe to the first house on the left.

303.903.0795 • TigressDesignStudio.com

Robyn Thayer

26

See Map Pages 14-15

Medium: Acrylic & Collage



Using rich texture and vibrant color, with collage and acrylics, I create representational paintings. My work conveys a dreamlike quality—reflecting the innocence and grandeur of where the private inner world and the wild outside meet.

Represented by Ahmyo River Gallery in Santa Fe, NM & Hotel Teatro in Denver, CO

Directions: 6539 Elaine Road

From Hwy 73, drive 2.8 mi. up Brook Forest Road. Turn RIGHT on Columbine, Drive .25mi. At "y" veer RIGHT on Elaine Road, drive .4mi.

Dark Green Studio and Home on Left. Park on road.

303.579.2972 • RobynThayer.com



THE *art* OF LOVING LIFE AND PLAYING WELL

HEALTHY PET SUPPLIES
FOR AN ACTIVE VIBRANT LIFESTYLE



COME JOIN OUR GROWING COMMUNITY OF PET LOVERS
AND ENJOY **20% OFF** YOUR FIRST PURCHASE WITH CODE **LOVEDOGS**

1260 Bergen Parkway, Evergreen, CO | 303-674-8711
www.chowdownpetsupplies.com



Mary Haling, MCNE
720-273-5769

Broker Associate
Member of Luxury Real Estate Board of Regents

5 Star Real Estate Agent Award Winner 2014-2023
 by nominations from my clients



Betsy Hoffman, LPA
303-847-1183

LIV | **Sotheby's**
 INTERNATIONAL REALTY

"Artfully uniting extraordinary homes with extraordinary lives"

coloradofoothillshomes.com



Michelene Berkey

Contemporary Jewelry
 Inspired by Nature
 303.670.8274

25

patti gill
kiln formed glass



16

Jeannette Stutzman

10 OIL & PASTEL PAINTINGS & ARTISAN JEWELRY



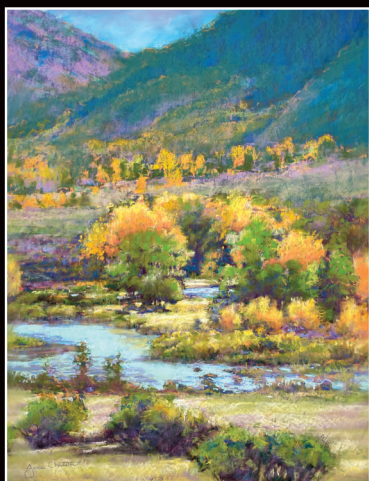
HANDMADE
JEWELRY~
GEMSTONES,
SILVER & MIXED METALS



 JeannetteStutzmanArtJewelry
JSARTJEWELRY.COM

 JeannetteStutzmanArt
JEANNETTESTUTZMAN.COM

JANE CHRISTIE



Janechristieart@gmail.com
720.480.3683

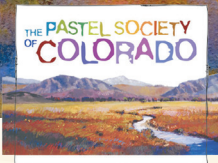
JaneChristieArt.com
SaksGalleries.com 1

Sarah St. George



sarahstgeorge.com

fine art pastels 23



PASTEL SOCIETY OF COLORADO

Join Us!

Our Membership Community Enjoys:

- In-Person Meetings & Demonstrations
- Pastel Workshops & 1-Day Classes
- Year-Round Paint-Outs
- Zoom Paint-Alongs
- Monthly E-Newsletters
- Option to Upload an Online Gallery & Bio



Our Exhibitions Are:

- Annual Members' Show
- Annual Mile High International Pastel Exhibition
- Small Works & Online Shows

Please Visit Us – See What We Have to Offer!

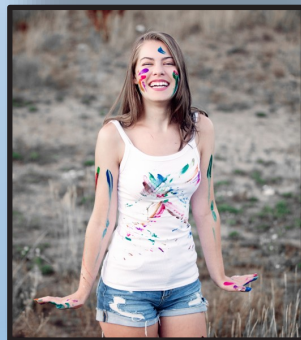


More Information Online at www.PastelSocietyofColorado.org

Congratulations to Grace Gill

2023 EAA Scholarship recipient

Grace graduated from
Conifer High School and will attend
University of Northern Colorado with an
emphasis on Art Education.



**Evergreen Artists Association is proud to be a sponsor
of the 2023 Open Door Studio Tour
and support artists in our community.**

*We are looking forward to the 2023 Festival
August 26-27 2023*

www.evergreenfineartsfestival.com



ARTWORK BY JULIE LEIDEL

At the center of the The Arts & Crafts Movement (1880-1920) was the principal that the head, heart, and hand should work as one. Local Evergreen artist Julie Leidel carries on these traditions with her period style artwork. In 2016, she was accepted as a Roycroft Renaissance Artisan, honoring the traditions and values set forth by Elbert Hubbard and The Roycrofters from East Aurora, NY. Julie was elevated in 2021 to Master Roycroft Artisan.

Much of her Colorado work is also inspired by the WPA & National Park poster era. Julie captures the essence of memory with over 105 gouache paintings from all over Colorado. She has another full lineup of artwork featuring over 85 mottos and motifs inspired by finding what connects us all, and the Art Nouveau and Arts & Crafts Movements. Craftsman-style, quarter-sawn oak frames complement much of her artwork. Julie offers all her artwork in 6 sizes on paper, metal, wood, and art canvas ensuring you can find a style that works best for your home.

www.thebungalowcraft.com

Artwork Evoking the
Feeling of Yesteryear

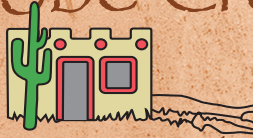


20

LOOKING FOR
COMMISSION ARTWORK?
JULIE.LEIDEL@GMAIL.COM

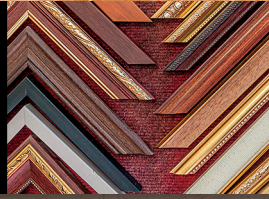


Adobe Creek



Framing & Fine Art Photography

Custom Framing for Every Budget | Gallery Wrap Canvases | Custom Mirrors
Ready Made Frames | Shrink Wrapping | Dry Mounting | Large Selection of Frames



It's our attention to details and customer service that keep our customers coming back. Quality craftsmanship with your budget in mind. —Ken Juliano, owner

Mon.-Fri., 10am-4pm, Sat. 10am-3pm | 26290 Hwy, 74 #7, Kittredge, CO. | 303.679.1128

BENEFICENCE OF WONDER

Robyn Thayer's Solo Exhibition of
Horns, Hooves, Honey & Grace



26

Showing now through January 2024
Hotel Teatro, 1100 14th Street, Denver
RobynThayer.com



Tuscany Tavern
A Taste Of Italy
Est. 2000



*Mention this ad
for a free cocktail!*

Fri & Sat 11-10, Sun Noon-9,
Mon-Thur 11-9

www.Tuscany-Tavern.com

303.674.3739

32214 Ellingwood Trail,
Evergreen, Colorado



*Supporting local artists
since 2017*

**A Curated Collection Of Gifts For
You And Your Home**

Magpie Mercantile Evergreen

27904 Meadow Drive
Evergreen, CO 80439
720-476-6117



@MAGPIEMERCANTILE

Magpie Mercantile Conifer

"In the historic yellow barn"
27061 Barkley Road
Conifer, CO 80433
303-838-7543

Open Friday, Saturday & Sunday

SUSAN WECHSLER



www.mosaicsbysusan.com
303.526.6349

Fine Art Mosaics

17



PROUDLY SPONSORED BY

Center for the Arts Evergreen

EvergreenArts.org

Evergreen Glass

EvergreenGlassInc.com

Evergreen National Bank

ENBColorado.com

Evergreen's Only Locally Owned Bank



*Proud Sponsor of the
Artists of Evergreen
Open Door Studios Tour*

Proudly Displaying Local Art Year-Round!



Evergreen National Bank

*Our Service Will Make You Smile—
Our Commitment Will Make You Stay*

303.674.2700

www.ENBColorado.com

Member
FDIC



You Imagine it, We Create it.



JON EADY
PHOTOGRAPHER

Visit our Facebook Page!



Evergreen Glass

29340 Industrial Way • Evergreen, CO 80439

303.674.6116

www.EvergreenGlassInc.com