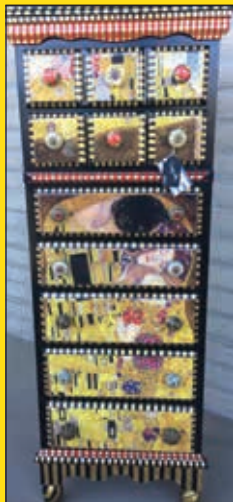




2024

Artists of Evergreen **OPEN DOOR STUDIOS**

WE'RE ALWAYS THE 3RD WEEKEND IN SEPTEMBER!



A Self-Guided Studio Tour & Art Demonstrations

SEPTEMBER 21 & 22, 2024
10AM - 5PM

WWW.EVERGREENOPENDOORSTUDIOS.COM

51ST ANNUAL

ROCKY MOUNTAIN NATIONAL *Watermedia*

SEPTEMBER 19 - OCTOBER 26
CENTER FOR THE ARTS EVERGREEN
EVERGREENARTS.ORG



Flurries

Mary Whyte, 2024 RMNW Juror



Lovers

Mary Whyte, 2024 RMNW Juror



Find Your Shine

Step into a world of exquisite craftsmanship and unparalleled beauty at Daniel Diamonds, your trusted destination for fine jewelry in Colorado. Nestled in the heart of Evergreen, we specialize in creating pieces that you will love for a lifetime.

Visit Daniel Diamonds today, where timeless elegance meets modern design.



DANIEL
DIAMONDS

FINE JEWELRY | CUSTOM JEWELRY | REPAIRS | GOLD BUYING

31955 CASTLE COURT #1N, EVERGREEN, COLORADO 80439

11-4 TUESDAY-FRIDAY & 11-3 SATURDAY

(303) 674-6673 | DANIELDIAMONDS.COM

Welcome Art Lovers!

We invite you into our working studios to see demonstrations, works in progress, and finished art pieces – Use this tour book to guide you from place to place. The Studio Tour is all free of charge. We'd love to see you!



Along the tour you can expect to meet the artists and discuss their tools and techniques and their inspiration!

Evergreen Glass is our primary sponsor and is our main distribution point for tour books. See Evergreen Glass on our back cover.

We are having our reception this year at Center for the Arts Evergreen on September 20th from 6-8pm and we hope you can join us! Our reception is sponsored by Evergreen National Bank.

Evergreen offers plenty of lodging and dining options to make it a great mountain getaway and ensure plenty of time to visit all of the studios. The two day, self-guided tour will take you to parts of Evergreen you may not see otherwise, winding through beautiful evergreen and aspen-lined roads.

Roadside signage will be abundant, making it easy to find each studio. Numbers on the signs correspond to each studio's circled number in the tour book to guide you along the way. We're excited to visit with you!

Sincerely,

Jeannette Stutzman

Artist #7 & ODS Studio Tour Coordinator



SAVE THE DATE FOR EACH YEAR!

WE'RE ALWAYS THE 3RD WEEKEND IN SEPTEMBER!

WWW.EVERGREENOPENDOORSTUDIOS.COM

Jane Christie

1

See Map Pages 16-17

Medium: Pastel

Painting is Jane's Passion. She chooses subjects that touch her heart and hopes to convey this emotional connection to the viewer through the paintings she creates. Achievements: Master Circle status in the International Association Of Pastel Societies, Signature member of Pastel Society of America, Pastel Society of Colorado.



Directions: 29340 Industrial Way

At Evergreen Glass: Go to I-70 to El Rancho & Evergreen Pky, exit, turn E at light on Swede Gulch Rd, R on Hotel Way, L on Nob Hill, L on Industrial Way, Building is on the R.

720.480.3683 • JaneChristieArt.com

Paul Thisted

2

See Map Pages 16-17

Medium: Oil



Western images are my creative focus. I capture spirited scenes with juicy color. I want the viewer to join my story & feel like they are part of it.

Directions: 1194 Red Lodge Drive #201

In Bergen Park at King Soopers light, turn onto Sugarbush Dr, turn L @ stop sign, staying on Sugarbush for 1/10 mile, turn L onto Red Lodge Dr, stop at bldg 1194 on the R. I am in unit #201 on R side.

720.273.1504 • PaulThisted.com

Joe Glasmire

3

See Map Pages 16-17

Medium: Oil, Watercolor, Drawing

My inspiration comes from nature especially the subtle and bold contrasts in light during different times of the day. My subjects mostly include landscapes. My drawings sometimes border on surreal imagery. My media includes oil, watercolor, pastel and pencil drawings.

Directions: Center for the Arts (CAE) 31880 Rocky Village Rd

From 74 turn E at the light on to Rt 65. CAE is on L. Turn L on Rocky Village Rd and R into the parking lot for CAE. Studio is on 2nd floor in new building at top of the stairs, down hallway on left.



303.917.9631 • EvergreenOpenDoorStudios.com

Carmen Donowho

4

See Map Pages 16-17

Medium: Acrylic, Watercolor, Gouache, Ceramics



Carmen Leigh, a lifelong artist, celebrates the beauty of the simplest moments using vibrant colors and a little bit of magic. Through acrylics, pastels, and other mediums, I hope my creations and crazy ideas inspire creativity and spreads joy to others.

Directions: Center for the Arts (CAE) 31880 Rocky Village Rd, Studio E

From 74 turn E at the light on to Rt 65. CAE is on L. Turn L on Rocky Village Rd and R into the parking lot for CAE.

720.948.5536 • CarmenLeigh.com

Jessica Loving

5

See Map Pages 16-17

Medium: Mixed Media Painting

Light drives my abstract impressionist paintings into their final form of expression and because of this, my work shifts in response to the seasonal rhythms in the natural environment. I am inspired by diurnal and nocturnal skies; the vaporous expanse overhead often takes hold of my compositions.



**Directions: Center for the Arts (CAE)
31880 Rocky Village Rd**

From 74 turn E at the light on to Rt 65. CAE is on L. Turn L on Rocky Village Rd and R into the parking lot for CAE.

303.642.5005 • JessicaLoving.com

Amy Love, Todd Lederman

6

See Map Pages 16-17

Medium: Mixed Media & Photography



In her Evergreen home studio, Ms. Love uses batik fabric, paper, paint, and wax to create art ranging from large landscapes to individual art cards noted for vibrant and bold colors. Mr. Lederman strips two photos together onto a series of alternating faces, creating a sense of movement and change.

Directions: 30019 Aspen Lane

From I-70 take CO HWY 74. Left (East) on Lewis Ridge Rd (across from Elk Meadow). Continue to end (0.8 miles). Right on Aspen Lane. Third house on right.

720.810.3984 • EvergreenOpenDoorStudios.com

Jeannette Stutzman

7

See Map Pages 16-17

Medium: Oil, Pastel, Artisan Jewelry

My passion is to create! My journey as a painter is to convey the energy

I feel outdoors through my art to the viewer. Offering painting classes in pastel and oil. Master Signature Member of the Pastel Society of CO.

Hand-crafted jewelry in silver, mixed metals, gemstones & beadweaving. See ad pg 22.



Directions: 3145 Sulky Lane

Frontage Rd off Evergreen Pkwy to Chestnut. Stay Left, up the hill, ½ mi. to Left on Sulky Lane to end of cul-de-sac. House on the Left, beige with red trim, red log decking.

720.320.3929 • JeannetteStutzman.com, JSArtJewelry.com

Crista Reid

8

See Map Pages 16-17

Medium: Jewelry (sterling silver, gold, gemstones)



Drawing on her expertise and experience as a fine jeweler and metalsmith, Crista brings a distinctive touch to each creation at Creatrix Designs. She has earned a reputation for delivering soulful and enchanting adornments, designed to enliven your inner muse. Inquire about bespoke creations!

Directions: 3145 Sulky Lane

Frontage Rd off Evergreen Pkwy to Chestnut. Stay Left, up the hill, ½ mi. to Left on Sulky Lane to end of cul-de-sac. House on the Left, beige with red trim, red log decking.

970.217.0870 • CreatrixDesigns.com

Janet Rundquist

9

See Map Pages 16-17

Medium: Mixed Media

My painting process begins when I'm alone in nature and carrying no art supplies. I try to be aware of all aspects of nature and of my emotional reactions to the movement, temperature, light, and the ever changing colors. Upon return to my studio, I abstractly translate those varied and powerful emotions to canvas.



Directions: 30746 Bryant Drive, #404

From Hwy 74 (Evergreen Parkway), turn West on Bryant Drive to the Evergreen Artisan Park. Follow the road to the top, then turn left. My studio is toward the East end of the building. Unit 404, light green door.

303.808.1047 • JanetRundquist.com

Matt Robertson

10

See Map Pages 16-17

Medium: Glass



Matt Robertson is best known for his matte finished caricature sculptures made of glass. His pieces are representative of moments in his life and his glass animal sculptures in hilarious situations show his fun-loving personality.

Directions: 30746 Bryant Dr, Unit #414

Turn Left at the top of the hill and look for the blue Oxygen and Propane tank.

720.799.5097 • EvergreenOpenDoorStudios.com

Wendi Richarson

11

See Map Pages 16-17

Medium: Mixed Media

I love to incorporate all types of recycled materials and found objects into my paintings. Lately, I've been focused on using materials that would otherwise end up in the landfill, such as Styrofoam, packing material, and other garbage to add texture and interest to my work.



Directions: 695 Snyder Mtn Rd

Hwy 74 to Stagecoach Blvd. Take to the end, then right onto Witter Gulch. First right onto Snyder Mountain Rd. About 1/2 mile up on the left. Please note, this is dirt road but well maintained.

860.593.8054 • TinWeedsArt.com

Gia Nold

12

See Map Pages 16-17

Medium: Oil, Acrylic, Mixed Media, Photography



My passion is in the creation and exploration of making art and the desire to discover new and fun outcomes. My art is eclectic, playful and always a surprise! Born in Peru, my imaginative touch is always present in my work. Lessons available/give away drawing!

Directions: 122 David Drive

Take Hwy 74 (from I-70) to Stagecoach. R on Stagecoach. L on Greystone. L on Witter Gulch. R on Upper Bear Creek. Pass Murphy Rd. R on Echo Lake Dr. R on the fork onto Patty Dr. L on David Dr. to 122 David Dr. The house is on the right.

303.564.4220 • TimepiecesStudio.com

Patti Gill

13

See Map Pages 16-17

Medium: Kiln-formed Glass

Patti has been exploring and experimenting in glass for about 15 years. Drawn to the synthesis of science and creativity that glass provides, her work exhibits her personal experience through the interplay of light, form, and color. Her work has been shown in galleries and art shows across the western US.



Directions: 27579 Fireweed Drive

Hwy 74 S toward the lake. Left on Douglas Pk Rd, stay to the left onto Meadow Dr. Take a left onto Iris Dr. to Fireweed. Take a right onto Fireweed to the 2nd driveway on the left (across from Lariat Lodge).

303.807.2314 • PattiGillGlass.com

Susan Wechsler

14

See Map Pages 16-17

Medium: Mixed Media Mosaics



Welcome to my Mixed Media Mosaic Studio where all the magic happens. I am known throughout the Globe for my unique techniques and I teach monthly in my Evergreen studio. Come take a look at what I mosaic, my studio walls, "MY GALLERY" are covered with my work.

Directions: 27905 Meadow Drive

Going South through the town of Evergreen, take a left at Meadow Drive and then your first right past CampFire Grill into Meadow Drive Village parking

lot. There is plenty of parking. I am in Unit #2 on the main floor behind the Colorado Creamery & next to Studio B yoga.

303.526.6349 • MosaicsBySusan.com

Margo Carter

15

See Map Pages 16-17

Medium: Painted Furniture, Sculptures, Paintings

I am a colorful person, I enjoy repurposing furniture allowing my pieces to be functional pieces of art, I love using pigments, inks acrylics and resin all together. I love doing commission pieces allowing my creativity to be very personal for the individual looking for that special piece. I also create resin/geode sculptures and miniature paintings.



Directions: 27760 Hwy 74 (Downtown)

Located in downtown Evergreen where Cozy Cleaners was. Over bridge, go left, 2nd cabin in the right.

720.201.0654 • EvergreenOpenDoorStudios.com

Laura Mehmert

16

See Map Pages 16-17

Medium: Oil, Watercolor, Sculpture, Pastel



Laura advocates a bold approach to her art. "As artists, we should not have to dot all the i's and cross the t's... I'd like the viewer to finish a painting or a sculpture in their mind. Become involved".

Directions: 28504 Meadow Drive

Hwy 74 south toward Evergreen lake, L on Douglas Park R. (across from Conoco). Stay L at fork onto Meadow Drive. Green house on right across from Hiwan Museum.

303.807.1018 • LauraMehmertDesigns.com

Pixie Glore-Morris

17

See Map Pages 16-17

Medium: Oils & Watercolor

My paintings express emotions through beautiful colors and thick paint. I use a palette knife layering colors until they glow and leave me with a sense of peace and awe. I paint landscapes, animals and people.

Directions: 5331 Anahina Road Indian Hills

Take Hwy 74 to Kitridge & turn R on Meyers Gulch Rd. Go 4.2 miles to Giant Gulch, go ¼ mile to Yellow blds with green trim –see the horses! From 285, go left on Parmalee Gulch, go 1.3 miles to Giant Gulch & turn left.



303.362.3495 • PixiesArt.com

Gretchen Borgelt

18

See Map Pages 16-17

Medium: Acrylic



I work with acrylic paints and mediums on wrapped canvas. Most of my landscapes use a large format and are modern, colorful and laden with texture. I've lived in Colorado for 34 years and in Evergreen for the past 22 years. You'll see our beautiful mountain surroundings in my paintings.

Directions: 6784 Olympus Dr

From Denver-take 285 S to N Turkey Creek. Right off the exit to Silverhorn. Right on Silverhorn to Olympus Dr. From Evergreen-Take 74 to 73 at the lake. At Marshdale roundabout take N Turkey Crk to Silverhorn to Olympus Drive.

303.887.9808 • ModernStrokes.com

Julie Leidel

19

See Map Pages 16-17

Medium: Gouache, Acrylic, Enamel, Mixed Media

Inspired by the Arts & Crafts Movement (1880-1920) and the WPA era, Roycroft Master Artisan Julie Leidel evokes a feeling of yesteryear through her artwork. Craftsman oak frames often complement her gouache, acrylic, and enamel paintings. Originals & prints in 6 sizes are available for over 200+ paintings.



Directions: 6582 Annapurna Drive

From North Turkey Creek Rd & Kilimanjaro Dr: Go 1.6 mi on Kilimanjaro. Left onto Olympus Dr, go .5 mi to a sharp right onto Annapurna Dr. 2nd driveway on the right where the mailbox says LEIDEL. Park on street & walk on up.

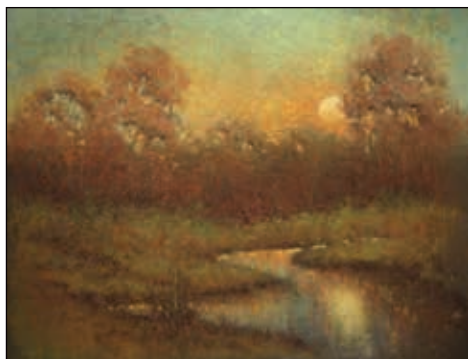
303.263.8577 • TheBungalowCraft.com

Roger Ambrosier

20

See Map Pages 16-17

Medium: Pastel



Roger's soft pastels reflect a "mood" from the landscape as opposed to an exact representation of the subject. His pastels have been recognized and awarded in several national shows.

Directions: 6209 S. Skyline Drive

From the downtown spotlight, turn on to Hwy 73 S. Go 1¼ miles, turn left on to S. Skyline Dr. (across from the ambulance bldg.) Continue on 1½ miles to the Santa Fe Adobe house.

303.674.6377 • EvergreenOpenDoorStudios.com

Sarah St. George

21

See Map Pages 16-17

Medium: Pastel

My paintings reflect a life long passion for the outdoors. The saturated colors and immediacy of soft pastels inspire me to capture the light and impression of a moment. I paint primarily landscapes both plein air and in my studio. I am a Master Signature member of the Pastel Society of Colorado.



Directions: 7853 Red Fox Drive

From HWY 73 take Malamute Dr (across from abandoned barn); @ T in road turn left onto Malamute Terrace, @ next T (past pond) turn right onto Red Fox Dr. Continue apx. 1/4 mile to Grey house on right #7853 (green mail box).

303.674.3561 • SarahStGeorge.com

Michelle Manquen

22

See Map Pages 16-17

Medium: Kilnformed Glass, Ceramic & Metals



My work is primarily kilnformed glass enhanced by combining metals and ceramics to create functional, wall hung and sculptural pieces.

Directions: 30066 Monroe Drive

From Hwy 73 turn onto Buffalo Park Rd. Turn left on Hatch. Hatch turns into Cliff, stay on the paved road. Turn left on Merriam. Turn right on Monroe. We are the first house on the left.

303.330.2516 • EvergreenOpenDoorStudios.com



Artists of Evergreen

OPEN DOOR STUDIOS

Map	Artist
1	Jane Christie
2	Paul Thisted
3	Joe Glasmire
4	Carmen Donowho
5	Jessica Loving
6	Amy Love, Todd Lederman
7	Jeannette Stutzman
8	Crista Reid
9	Janet Rundquist
10	Matt Robertson
11	Wendi Richardson
12	Gia Nold
13	Patti Gill
14	Susan Wechsler
15	Margo Carter
16	Laura Mehmert
17	Pixie Glore-Morris
18	Gretchen Borgelt
19	Julie Leidel
20	Roger Ambrosier
21	Sarah St. George
22	Michelle Manquen
23	Michelene Berkey
24	Christina Oddo
25	Robyn Thayer
26	Carlene Holtz
27	Nikki Miles

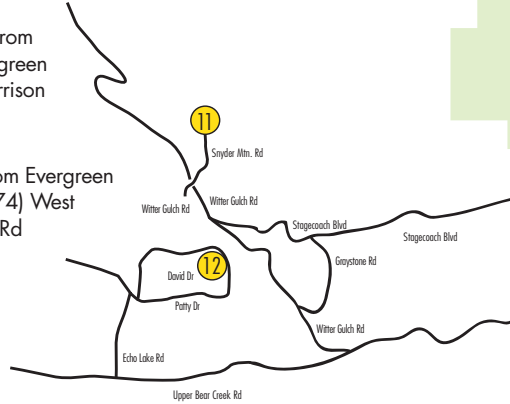
DISTANCES & TRAVEL TIMES:

It is 7 ½ miles from I-7 to Downtown Evergreen
(12 minutes)

It is 9 miles from Downtown Evergreen to Hwy 285 in Conifer
(16 minutes)

It is 12.4 miles from
Downtown Evergreen
to C-470 at Morrison
(21 minutes)

It is 4.2 miles from Evergreen
Parkway (Hwy 74) West
to Witter Gulch Rd
(9 minutes)



Please join us Friday evening
September 20th, 6-8pm for our

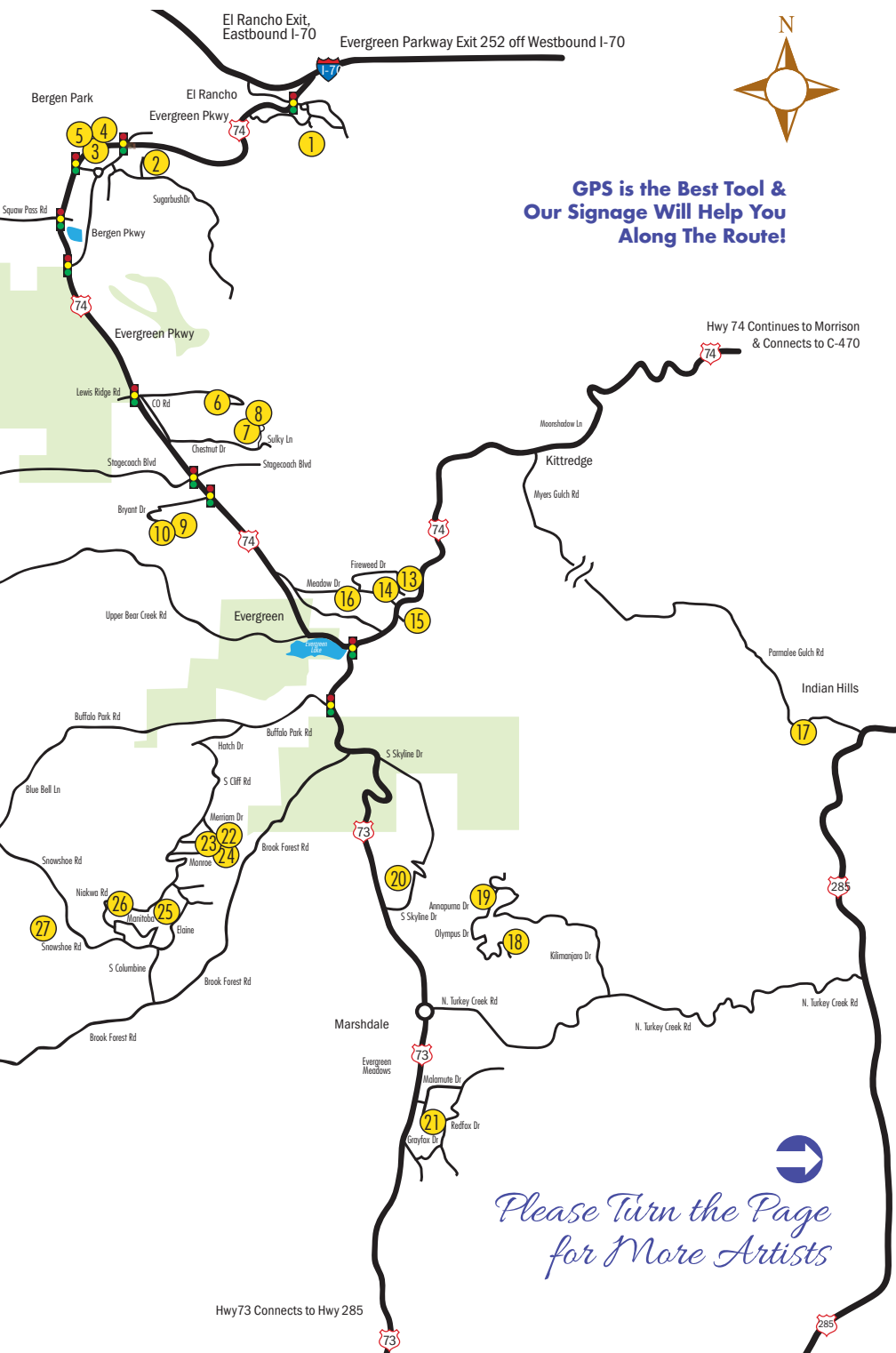
*Opening Reception
with the Artists*

**at Center for the Arts Evergreen
31880 Rocky Village Dr, Evergreen**

Flors d'oeuvres, wine and beer

Participation in the tour is voluntary. No responsibility shall attach to the involved associations, their Officers, Members or Volunteers or to Participating Artists for loss, theft or damage to property, or to bodily injury or death resulting from participation in the Tour, howsoever caused.

EVERGREENOPENDOORSTUDIOS.COM



**GPS is the Best Tool &
Our Signage Will Help You
Along The Route!**

*Please Turn the Page
for More Artists*

Micheline Berkey

23

See Map Pages 16-17

Medium: Jewelry

Living in the foothills of Denver my jewelry is a reflection of the environment that surrounds me. Small twigs are cast in gold and silver; leaves are roller-printed silver sheet. Each piece of jewelry is fabricated using traditional metalsmithing techniques and embellished with high karat gold and select gemstones.



Directions: 30066 Monroe Drive

From Hwy 73 turn onto Buffalo Park RD. Turn left on Hatch. Hatch turns into Cliff, stay on the paved road. Turn left on Merriam. Turn rt on Monroe to the first house on the left.

303.903.0795 • TigressDesignStudio.com

Christina Oddo

24

See Map Pages 16-17

Medium: Pastel & Acrylic



By immersing and connecting with my natural surroundings, I strive to bridge my emotional response with the representational elements of a location. In my recent work I've been layering pastel and pencils over acrylic washes, which has created some amazing effects that truly celebrate nature. A must see in person!

Directions: 30066 Monroe Drive

From Hwy 73 turn onto Buffalo Park RD. Turn left on Hatch. Hatch turns into Cliff, stay on the paved road. Turn left on Merriam. Turn rt on Monroe to the first house on the left.

484.883.1186 • CoStudios.com

Robyn Thayer

25

See Map Pages 16-17

Medium: Paintings in Acrylic; Jewelry in Gemstones, Silver, & Silk

Using rich texture and vibrant color, with collage and acrylics, I create representational paintings. My work conveys a dreamlike quality- reflecting the innocence and grandeur of where the private inner world and the wild outside meet. Represented by Ahmyo River Gallery in Santa Fe, NM and Schoonover Gallery in Steamboat, CO.



Directions: 6539 Elaine Road

From Hwy 73, drive 2.8 mi. up Brook Forest Road. Turn RIGHT on Columbine, Drive

.25mi. At "y" veer RIGHT on Elaine Road, drive .4mi. Dark Green Studio and Home on Left. Park on road.

303.579.2972 • RobynThayer.com

Carlene Holtz

26

See Map Pages 16-17

Medium: Acrylic & Multimedia



Carlene is an Ohio native, mother, artist, 23 year business owner and past President of the Geauga County Arts Council. Her works typically evoke a sense of reverence for the natural world through painting, sculpture and mixed media. Carlene looks forward to planting her roots and blossoming in Evergreen.

Directions: 31178 Niakwa Road

Carlene's studio is located on Evergreen Mountain where the deer and Elk meander in the meadow. It is 8 mins from Evergreen High School.

440.313.8012 • CarleneHoltzArt.com

Medium: Pastel & Acrylic

Joy is the word that comes to mind when I think about painting! Joy in the vibrant colors, joy in painting, & joy in sharing! Working from a unique perspective, my work is inspired by rich, saturated colors and a special view of everyday objects. I hope my studio will bring a smile to your face!



Directions: 32454 Snowshoe Rd

From Hiway 73 turn on Buffalo Park Rd for 3 miles till fork in road. Veer left onto Bluebell Lane for 1/4 mile. Turn left on Snowshoe Rd for 1/4 mile to 4th driveway on right. Studio is 2nd house at end of driveway.

303.818.3712 • NikkiMilesFineArtGallery.com



*Supporting local artists
since 2017*

**A Curated Collection Of Gifts For
You And Your Home**

Magpie Mercantile Evergreen

27904 Meadow Drive
Evergreen, CO 80439
720-476-6117

Magpie Mercantile Conifer

"In the historic yellow barn"
27061 Barkley Road
Conifer, CO 80433
303-838-7543



@MAGPIEMERCANTILE

Open Friday, Saturday & Sunday



THE *art* OF LOVING LIFE AND PLAYING WELL

HEALTHY PET SUPPLIES
FOR AN ACTIVE VIBRANT LIFESTYLE



COME JOIN OUR GROWING COMMUNITY OF PET LOVERS
AND ENJOY **20% OFF** YOUR FIRST PURCHASE WITH CODE **LOVEDOGS**

1260 Bergen Parkway, Evergreen, CO | **303-674-8711**
www.chowdownpetsupplies.com

Jeannette Stutzman

7

OIL & PASTEL PAINTINGS & ARTISAN JEWELRY



JeannetteStutzmanArt

JEANNETTESTUTZMAN.COM



JeannetteStutzmanArtJewelry

JSAJEWELRY.COM

JANE CHRISTIE



Janechristieart@gmail.com
720.480.3683

JaneChristieArt.com
SaksGalleries.com

1

Sarah St. George



sarahstgeorge.com

fine art pastels

21



Mary Haling, MCNE
720-273-5769

Broker Associate
Member of Luxury Real Estate Board of Regents

5 Star Real Estate Agent Award Winner 2014-2024
by nominations from my clients



Betsy Hoffman, LPA
303-847-1183

LIV | Sotheby's
INTERNATIONAL REALTY

"Artfully uniting extraordinary homes with extraordinary lives"

coloradofoothillshomes.com

**Congratulations to
Ainsley Clagett**
2024 EAA Scholarship recipient

Ainsley graduated from
Conifer High School and will attend
State University of New York at New Paltz
and majoring in Costume Design.



Evergreen Artists Association is proud to be a sponsor
of the 2024 Open Door Studio Tour
and support artists in our community.

We are looking forward to the 2024 Festival
August 24-25, 2024

www.evergreenfineartsfestival.com





PASTEL SOCIETY
OF COLORADO

Join Us!

Our Membership Community Enjoys:

- In-Person Meetings & Demonstrations
- Pastel Workshops & 1-Day Classes
- Year-Round Paint-Outs
- Zoom Paint-Along Demos
- Monthly E-Newsletters
- Option to Upload an Online Gallery & Bio

Our Exhibitions Are:

- Annual Members' Show
- Annual Mile High International Pastel Exhibition
- Small Works & Online Shows



Please Visit Our Site – See What We Have to Offer!



More Information Online at www.PastelSocietyofColorado.org

Jeannette Stutzman
Weightloss & Lifestyle Coach

I Lost 73 Pounds! Ask Me How!



**Make Living A
Healthy Lifestyle
Second Nature**

In a clinical study, the group on the Optimal Weight 5 & 1 Plan® lost 10x more weight than the self-directed group. Average weight loss on the Optimal Weight 5 & 1 Plan is 12 pounds.

Let's Talk About YOUR Goals 720.320.3929



SHADOW MOUNTAIN

GALLERY

Fine art and fine crafts by local
Evergreen artists
One-of-a-kind pieces priced
for every budget
A must for local residents,
guests and out-of-town visitors



Stephanie Foster



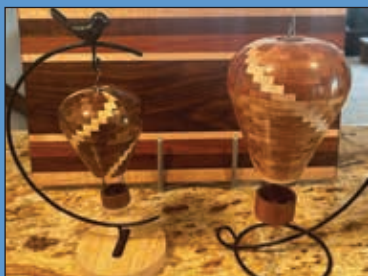
Karen Armon



Kathy Olsson



Elaine Redfern



Larry Hughes



Susan Landis

2 Paul Thisted

13 Patti Gill

Located on Main Street in Downtown
Evergreen, between Java Groove and
Beau Jo's. Open Daily 10 -5
ShadowMountainGallery.com

Adobe Creek



Framing & Fine Art Photography

Custom Framing for Every Budget | Gallery Wrap Canvases | Custom Mirrors
Ready Made Frames | Shrink Wrapping | Dry Mounting | Large Selection of Frames



It's our attention to details and customer service that keep our customers coming back. Quality craftsmanship with your budget in mind. —Ken Juliano, owner

Mon.-Fri., 10am-4pm, Sat. 10am-3pm | 26290 Hwy, 74 #7, Kittredge, CO. | 303.679.1128



Join Us for Our Opening Reception with the Artists



*Friday Evening
September 20, 6-8pm*

PROUDLY SPONSORED BY
Center for the Arts Evergreen
EvergreenArts.org

Daniel Diamonds
DanielDiamonds.com

Evergreen Glass
EvergreenGlassInc.com

Evergreen National Bank
ENBColorado.com

Sponsored by
Evergreen National Bank

Hosted by
Center for the Arts Evergreen
in Bergen Park

*Hors d'oeuvres,
wine and beer*

❖ *Event for the Public* ❖

LAURA MEHMERT

- Watercolor, Oil & Drawing
Classes & Workshops

LMehmert@mac.com
303-807-1018

In my paintings I strive
to be authentic and
capture the essence of
my subjects.



LauraMehmertDesigns.com

16

One Studio, Three Artists

creative artistic expressions in a variety of mediums and styles



Michelene Berkey
Jewelry



Michelle Manquen
*Kilnformed Glass,
Ceramic & Metals*



Christina Oddo
*Pastel & Acrylic
Paintings*



Michelle Manquen's Studio
30066 Monroe Drive, Evergreen, CO

22

23

24



WWW.THEBUNGALOWCRAFT.COM

ARTWORK EVOKING THE FEELING OF YESTERYEAR



EVERGREEN-BASED • ROYCROFT MASTER ARTISAN • JULIE LEIDEL

Julie fell in love with Art Nouveau, The Arts & Crafts Movement (1880-1920) and the national park & travel posters of the past. Julie creates original, hand-painted artwork in gouache, acrylic, and enamel.

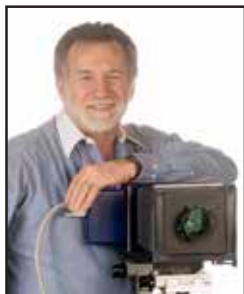
Original artwork, open-edition prints of her 200+ paintings, and custom artwork available.

julieleidel@thebungalowcraft.com | www.thebungalowcraft.com



Colorado Fine Art Reproduction

division of The Imagery Group



High Resolution Scanning of Fine Art

2D originals up through 48"x60"

tabletop 3D art, sculpture & jewelry

Giclée & Limited Edition Fine Art Printing

onto photo, fine art papers or canvas

sizes through 40"x60"

10% discount with this ad

Serving artists and galleries since 1982

Conveniently located in Conifer

(303) 838-0626 • email barry@coloradofineartreproduction.com

www.coloradofineartreproduction.com

Los 3 Garcías
www.los3garciasrestaurants.com

25567 Conifer Rd. Suite 120
Conifer, CO 80432
303-838-7371

LOS 3 GARCÍAS
MEXICAN RESTAURANT CONIFER

patti gill

kiln formed glass



303.807.2314
27579 Fireweed Drive Evergreen, CO
pattigillglass@gmail.com

PATTIGILLGLASS.COM

13

WENDI RICHARDSON ART



Check out latest creations at

🌐: www.TinWeedsArt.com

📱: Wendi Richardson Art

©: Wendi Richardson Art

11

Tuscany Tavern
A Taste Of Italy
Est. 2000



*Mention this ad
for a free cocktail!*

Fri & Sat 11-10, Sun Noon-9,
Mon-Thur 11-9

www.Tuscany-Tavern.com
303.674.3739

32214 Ellingwood Trail,
Evergreen, Colorado

Evergreen's Only Locally Owned Bank



*Proud Sponsor of the
Artists of Evergreen
Open Door Studios Tour*

**Sponsor, Opening Reception to meet the Artists held
at the Center for the Arts Evergreen on Sept 20, 2024**



Evergreen National Bank

*Our Service Will Make You Smile—
Our Commitment Will Make You Stay*

303.674.2700

www.ENBColorado.com

Member
FDIC



You Imagine it, We Create it.



JON EADY
PHOTOGRAPHER

Visit our Facebook Page!



Evergreen Glass

29340 Industrial Way • Evergreen, CO 80439

303.674.6116

www.EvergreenGlassInc.com